

Grossel Tool Company

Cylinder Catalogue

Section H

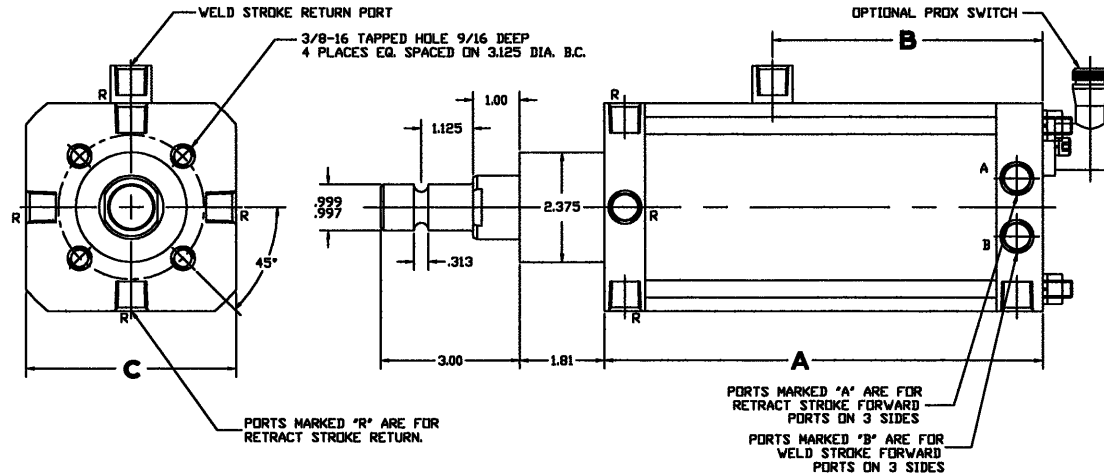
Single Piston

Retractable Style

Pre-Lubed

Air Cylinders



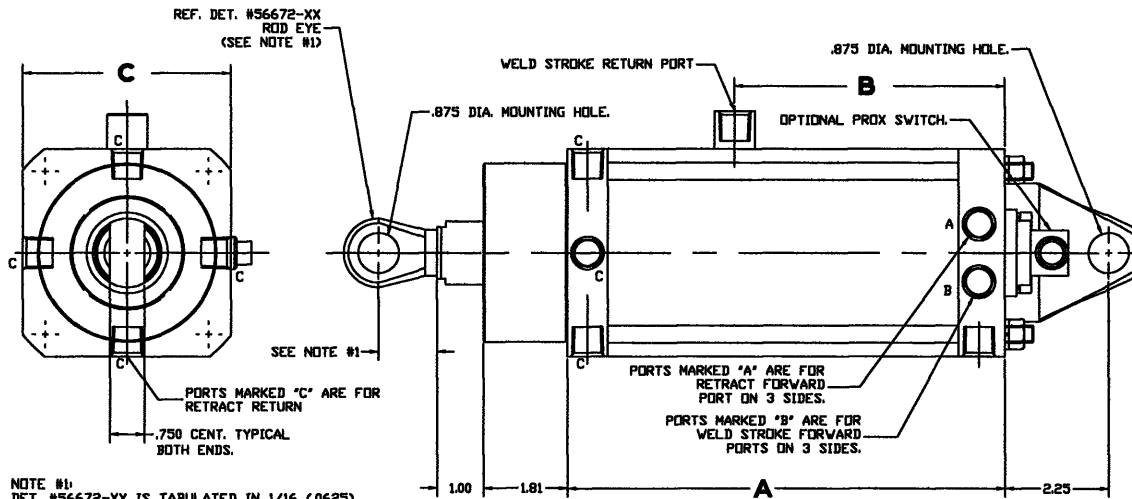


2.00" WELD STROKE ON ALL RETRACT CYLINDERS

SINGLE PISTON ~ RETRACTABLE ~ FACE MOUNT ~ PRE-LUBED ~ PROX READY WELD CYLINDER

FOR EACH ADDITIONAL 1/2" OF STROKE LONGER THAN SHOWN ADD 1.00" TO DIMENSION "A" AND 1/2" INCH TO DIMENSION "B"

BORE	MODEL NO.	RETRACT STROKE	TABULATED DIMENSIONS			PISTON AREA		FORCE AT LINE PRESSURE P.S.I.			
			A	B	C	FORWARD	RETURN	50	60	70	80
3.50 DIA. BORE	91002-02	1.00	9.44	5.81	4.50	9.62 SQ. IN.	8.13 SQ. IN.	481 LBS.	577 LBS.	673 LBS.	769 LBS.
	91002-03	1.50	9.94	5.81							
	91002-04	2.00	10.44	5.81							
	91002-05	2.50	10.94	5.81							
	91002-06	3.00	11.44	5.81							
	91002-07	3.50	12.44	6.31							
4.00 DIA. BORE	91003-02	1.00	9.44	5.81	5.00	12.56 SQ. IN.	11.08 SQ. IN.	628 LBS.	753 LBS.	879 LBS.	1004 LBS.
	91003-03	1.50	9.94	5.81							
	91003-04	2.00	10.44	5.81							
	91003-05	2.50	10.94	5.81							
	91003-06	3.00	11.44	5.81							
	91003-07	3.50	12.44	6.31							
4.50 DIA. BORE	91004-02	1.00	9.44	5.81	5.75	15.90 SQ. IN.	14.41 SQ. IN.	795 LBS.	954 LBS.	1113 LBS.	1272 LBS.
	91004-03	1.50	9.94	5.81							
	91004-04	2.00	10.44	5.81							
	91004-05	2.50	10.94	5.81							
	91004-06	3.00	11.44	5.81							
	91004-07	3.50	12.44	6.31							
5.00 DIA. BORE	91005-02	1.00	9.44	5.81	6.25	19.63 SQ. IN.	18.15 SQ. IN.	981 LBS.	1177 LBS.	1374 LBS.	1570 LBS.
	91005-03	1.50	9.94	5.81							
	91005-04	2.00	10.44	5.81							
	91005-05	2.50	10.94	5.81							
	91005-06	3.00	11.44	5.81							
	91005-07	3.50	12.44	6.31							
5.50 DIA. BORE	91006-02	1.00	9.44	5.81	6.75	23.75 SQ. IN.	22.27 SQ. IN.	1187 LBS.	1425 LBS.	1662 LBS.	1900 LBS.
	91006-03	1.50	9.94	5.81							
	91006-04	2.00	10.44	5.81							
	91006-05	2.50	10.94	5.81							
	91006-06	3.00	11.44	5.81							
	91006-07	3.50	12.44	6.31							
91006-08	4.00	13.44	6.81								



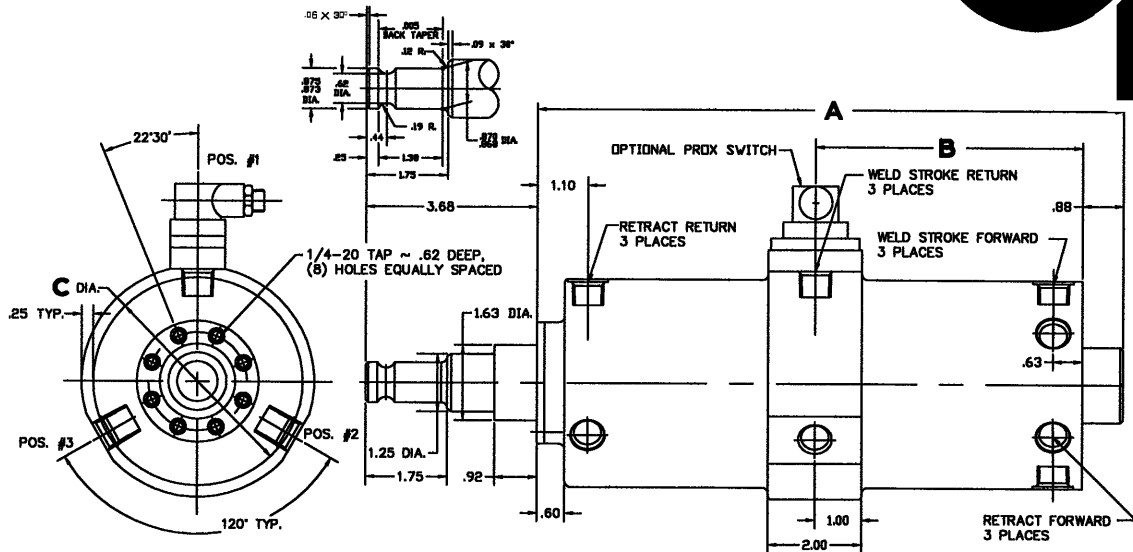
NOTE #1:
DET. #56672-XX IS TABULATED IN 1/16 (.0625)
INCREMENTS WITH A MINIMUM LENGTH OF 1.25 IN.
AND MUST BE ORDERED SEPERATELY.

2.00' WELD STROKE ON ALL RETRACT CYLINDERS

SINGLE PISTON ~ RETRACTABLE ~ CLEVIS MOUNT ~ PRE-LUBED ~ PROX READY WELD CYLINDER

FOR EACH ADDITIONAL 1/2" OF STROKE LONGER THAN SHOWN ADD 1.00" TO DIMENSION "A" AND 1/2" INCH TO DIMENSION "B"

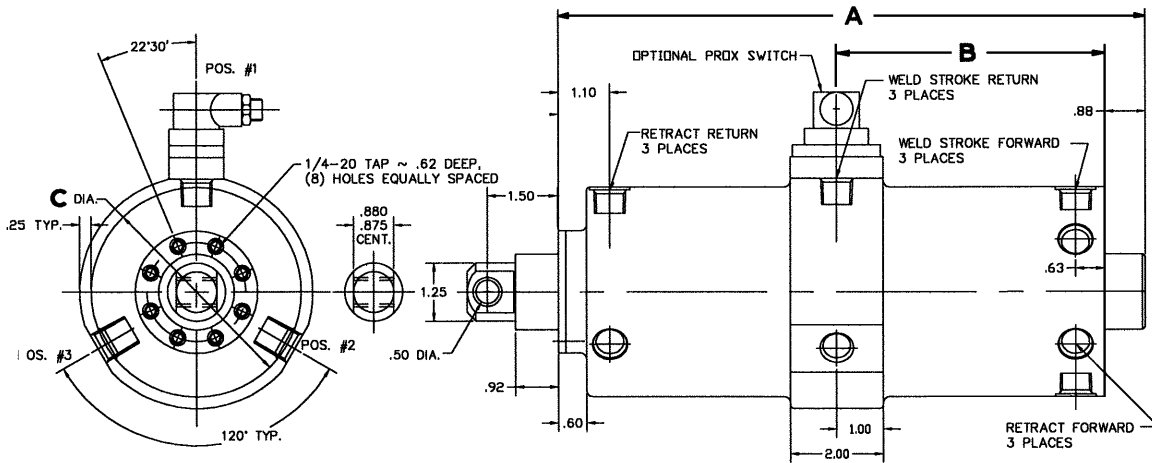
BORE	MODEL NO.	RETRACT STROKE	TABULATED DIMENSIONS			PISTON AREA		FORCE AT LINE PRESSURE P.S.I.			
			A	B	C	FORWARD	RETURN	50	60	70	80
3.50 DIA. BORE	91020-02	1.00	9.44	5.81	4.50	9.62 SQ. IN.	8.13 SQ. IN.	481 LBS.	577 LBS.	673 LBS.	769 LBS.
	91020-03	1.50	9.94	5.81							
	91020-04	2.00	10.44	5.81							
	91020-05	2.50	10.94	5.81							
	91020-06	3.00	11.44	5.81							
	91020-07	3.50	12.44	6.31							
4.00 DIA. BORE	91021-02	1.00	9.44	5.81	5.00	12.56 SQ. IN.	11.08 SQ. IN.	628 LBS.	753 LBS.	879 LBS.	1004 LBS.
	91021-03	1.50	9.94	5.81							
	91021-04	2.00	10.44	5.81							
	91021-05	2.50	10.94	5.81							
	91021-06	3.00	11.44	5.81							
	91021-07	3.50	12.44	6.31							
4.50 DIA. BORE	91022-02	1.00	9.44	5.81	5.75	15.90 SQ. IN.	14.41 SQ. IN.	795 LBS.	954 LBS.	1113 LBS.	1272 LBS.
	91022-03	1.50	9.94	5.81							
	91022-04	2.00	10.44	5.81							
	91022-05	2.50	10.94	5.81							
	91022-06	3.00	11.44	5.81							
	91022-07	3.50	12.44	6.31							
5.00 DIA. BORE	91023-02	1.00	9.44	5.81	6.25	19.63 SQ. IN.	18.15 SQ. IN.	981 LBS.	1177 LBS.	1374 LBS.	1570 LBS.
	91023-03	1.50	9.94	5.81							
	91023-04	2.00	10.44	5.81							
	91023-05	2.50	10.94	5.81							
	91023-06	3.00	11.44	5.81							
	91023-07	3.50	12.44	6.31							
5.50 DIA. BORE	91024-02	1.00	9.44	5.81	6.75	23.75 SQ. IN.	22.27 SQ. IN.	1187 LBS.	1425 LBS.	1662 LBS.	1900 LBS.
	91024-03	1.50	9.94	5.81							
	91024-04	2.00	10.44	5.81							
	91024-05	2.50	10.94	5.81							
	91024-06	3.00	11.44	5.81							
	91024-07	3.50	12.44	6.31							
91024-08	4.00	13.44	6.81								



SINGLE PISTON ~ RETRACTABLE ~ PRE-LUBED ~ NON ROTATE ~ PROX READY WELD CYLINDER

FOR EACH ADDITIONAL 1/2' OF STROKE LONGER THAN SHOWN ADD 1.00" TO DIMENSION 'A' AND 1/2" INCH TO DIMENSION 'B'

BORE	MODEL NO.	RETRACT STROKE	TABULATED DIMENSIONS			PISTON AREA		FORCE AT LINE PRESSURE P.S.I.			
			A	B	C	FORWARD	RETURN	50	60	70	80
3.50 DIA. BORE	91026-1-2-35-10-C	1.00	10.60	5.75	5.00	9.62 SQ. IN.	8.13 SQ. IN.	481 LBS.	577 LBS.	673 LBS.	769 LBS.
	91026-1-2-35-15-C	1.50	11.10	5.75							
	91026-1-2-35-20-C	2.00	11.60	5.75							
	91026-1-2-35-25-C	2.50	12.10	5.75							
	91026-1-2-35-30-C	3.00	12.60	5.75							
	91026-1-2-35-35-C	3.50	13.60	6.25							
4.00 DIA. BORE	91026-1-2-40-10-C	1.00	10.60	5.75	5.50	12.56 SQ. IN.	11.08 SQ. IN.	628 LBS.	753 LBS.	879 LBS.	1004 LBS.
	91026-1-2-40-15-C	1.50	11.10	5.75							
	91026-1-2-40-20-C	2.00	11.60	5.75							
	91026-1-2-40-25-C	2.50	12.10	5.75							
	91026-1-2-40-30-C	3.00	12.60	5.75							
	91026-1-2-40-35-C	3.50	13.60	6.25							
4.50 DIA. BORE	91026-1-2-45-10-C	1.00	10.60	5.75	6.25	15.90 SQ. IN.	14.41 SQ. IN.	795 LBS.	954 LBS.	1113 LBS.	1272 LBS.
	91026-1-2-45-15-C	1.50	11.10	5.75							
	91026-1-2-45-20-C	2.00	11.60	5.75							
	91026-1-2-45-25-C	2.50	12.10	5.75							
	91026-1-2-45-30-C	3.00	12.60	5.75							
	91026-1-2-45-35-C	3.50	13.60	6.25							
5.00 DIA. BORE	91026-1-2-50-10-C	1.00	10.60	5.75	6.75	19.63 SQ. IN.	18.15 SQ. IN.	981 LBS.	1177 LBS.	1374 LBS.	1570 LBS.
	91026-1-2-50-15-C	1.50	11.10	5.75							
	91026-1-2-50-20-C	2.00	11.60	5.75							
	91026-1-2-50-25-C	2.50	12.10	5.75							
	91026-1-2-50-30-C	3.00	12.60	5.75							
	91026-1-2-50-35-C	3.50	13.60	6.25							
5.50 DIA. BORE	91026-1-2-55-10-C	1.00	10.60	5.75	7.25	23.75 SQ. IN.	22.27 SQ. IN.	1187 LBS.	1425 LBS.	1662 LBS.	1900 LBS.
	91026-1-2-55-15-C	1.50	11.10	5.75							
	91026-1-2-55-20-C	2.00	11.60	5.75							
	91026-1-2-55-25-C	2.50	12.10	5.75							
	91026-1-2-55-30-C	3.00	12.60	5.75							
	91026-1-2-55-35-C	3.50	13.60	6.25							
6.00 DIA. BORE	91026-1-2-60-10-C	1.00	10.60	5.75	7.75	29.27 SQ. IN.	27.04 SQ. IN.	1463 LBS.	1756 LBS.	2048 LBS.	2341 LBS.
	91026-1-2-60-15-C	1.50	11.10	5.75							
	91026-1-2-60-20-C	2.00	11.60	5.75							
	91026-1-2-60-25-C	2.50	12.10	5.75							
	91026-1-2-60-30-C	3.00	12.60	5.75							
	91026-1-2-60-35-C	3.50	13.60	6.25							
	91026-1-2-60-40-C	4.00	14.60	6.75							



SINGLE PISTON ~ RETRACTABLE ~ PRE-LUBED ~ NON ROTATE ~ PROX READY WELD CYLINDER

FOR EACH ADDITIONAL 1/2" OF STROKE LONGER THAN SHOWN ADD 1.00" TO DIMENSION 'A' AND 1/2" INCH TO DIMENSION 'B'

BORE	MODEL NO.	RETRACT STROKE	TABULATED DIMENSIONS			PISTON AREA		FORCE AT LINE PRESSURE P.S.I.			
			A	B	C	FORWARD	RETURN	50	60	70	80
3.50 DIA. BORE	91026-1-2-35-10-P	1.00	10.60	5.75	5.00	9.62 SQ. IN.	8.13 SQ. IN.	481 LBS.	577 LBS.	673 LBS.	769 LBS.
	91026-1-2-35-15-P	1.50	11.10	5.75							
	91026-1-2-35-20-P	2.00	11.60	5.75							
	91026-1-2-35-25-P	2.50	12.10	5.75							
	91026-1-2-35-30-P	3.00	12.60	5.75							
	91026-1-2-35-35-P	3.50	13.60	6.25							
4.00 DIA. BORE	91026-1-2-40-10-P	1.00	10.60	5.75	5.50	12.56 SQ. IN.	11.08 SQ. IN.	628 LBS.	753 LBS.	879 LBS.	1004 LBS.
	91026-1-2-40-15-P	1.50	11.10	5.75							
	91026-1-2-40-20-P	2.00	11.60	5.75							
	91026-1-2-40-25-P	2.50	12.10	5.75							
	91026-1-2-40-30-P	3.00	12.60	5.75							
	91026-1-2-40-35-P	3.50	13.60	6.25							
4.50 DIA. BORE	91026-1-2-45-10-P	1.00	10.60	5.75	6.25	15.90 SQ. IN.	14.41 SQ. IN.	795 LBS.	954 LBS.	1113 LBS.	1272 LBS.
	91026-1-2-45-15-P	1.50	11.10	5.75							
	91026-1-2-45-20-P	2.00	11.60	5.75							
	91026-1-2-45-25-P	2.50	12.10	5.75							
	91026-1-2-45-30-P	3.00	12.60	5.75							
	91026-1-2-45-35-P	3.50	13.60	6.25							
5.00 DIA. BORE	91026-1-2-50-10-P	1.00	10.60	5.75	6.75	19.63 SQ. IN.	18.15 SQ. IN.	981 LBS.	1177 LBS.	1374 LBS.	1570 LBS.
	91026-1-2-50-15-P	1.50	11.10	5.75							
	91026-1-2-50-20-P	2.00	11.60	5.75							
	91026-1-2-50-25-P	2.50	12.10	5.75							
	91026-1-2-50-30-P	3.00	12.60	5.75							
	91026-1-2-50-35-P	3.50	13.60	6.25							
5.50 DIA. BORE	91026-1-2-55-10-P	1.00	10.60	5.75	7.25	23.75 SQ. IN.	22.27 SQ. IN.	1187 LBS.	1425 LBS.	1662 LBS.	1900 LBS.
	91026-1-2-55-15-P	1.50	11.10	5.75							
	91026-1-2-55-20-P	2.00	11.60	5.75							
	91026-1-2-55-25-P	2.50	12.10	5.75							
	91026-1-2-55-30-P	3.00	12.60	5.75							
	91026-1-2-55-35-P	3.50	13.60	6.25							
6.00 DIA. BORE	91026-1-2-60-10-P	1.00	10.60	5.75	7.75	29.27 SQ. IN.	27.04 SQ. IN.	1463 LBS.	1756 LBS.	2048 LBS.	2341 LBS.
	91026-1-2-60-15-P	1.50	11.10	5.75							
	91026-1-2-60-20-P	2.00	11.60	5.75							
	91026-1-2-60-25-P	2.50	12.10	5.75							
	91026-1-2-60-30-P	3.00	12.60	5.75							
	91026-1-2-60-35-P	3.50	13.60	6.25							
	91026-1-2-60-40-P	4.00	14.60	6.75							